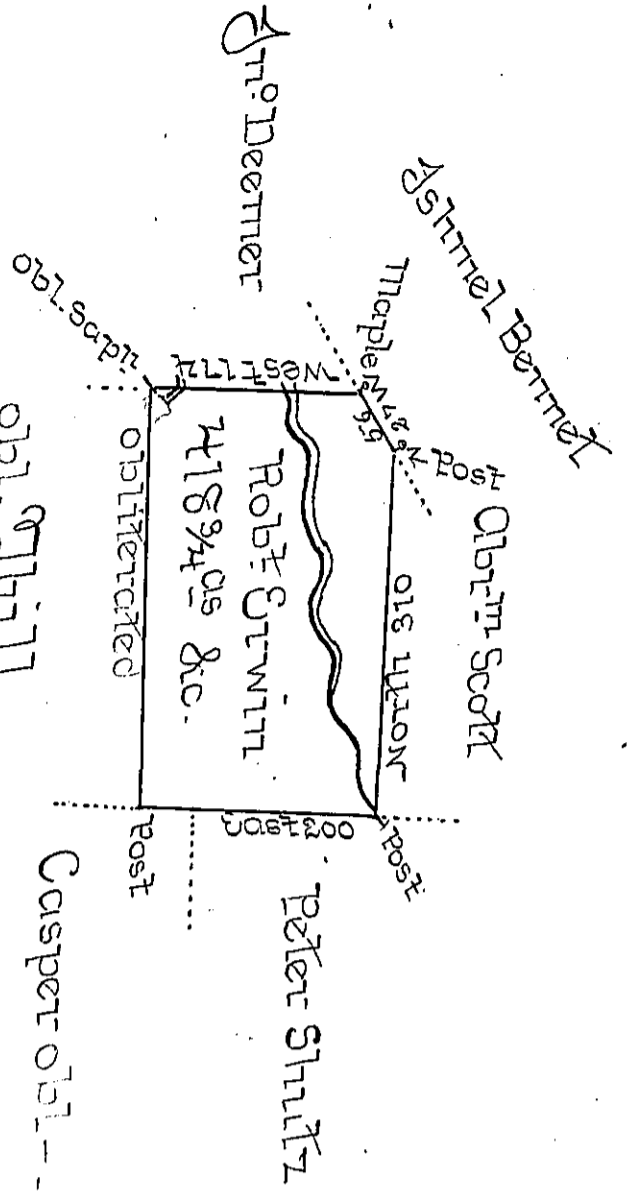


[Handwritten mark]



Draft of a tract of land called _____ Situate in the Co-
 munity of Luzerne Co. Containing four Hundred & Eighteen
 acres $\frac{3}{4}$ & allowance surveyed for Robt. Erwin the 9th day
 of August 1793 by virtue of a warrant dated the 4 day of
 Jan^y. 1793

by Wm Gray obl.

Daniel Brodhead Esq^r }
 Survey Gen^l ~ }

IN TESTIMONY that the above is a copy of the original remaining on file in the
 Department of Internal Affairs of Pennsylvania, made con-
 formably to an Act of Assembly approved the 16th day of
 February, 1833, I have hereunto set my Hand and caused
 the Seal of said Department to be affixed at Harrisburg, this
second day of November 1897

James W. Patta
 Secretary of Internal Affairs.